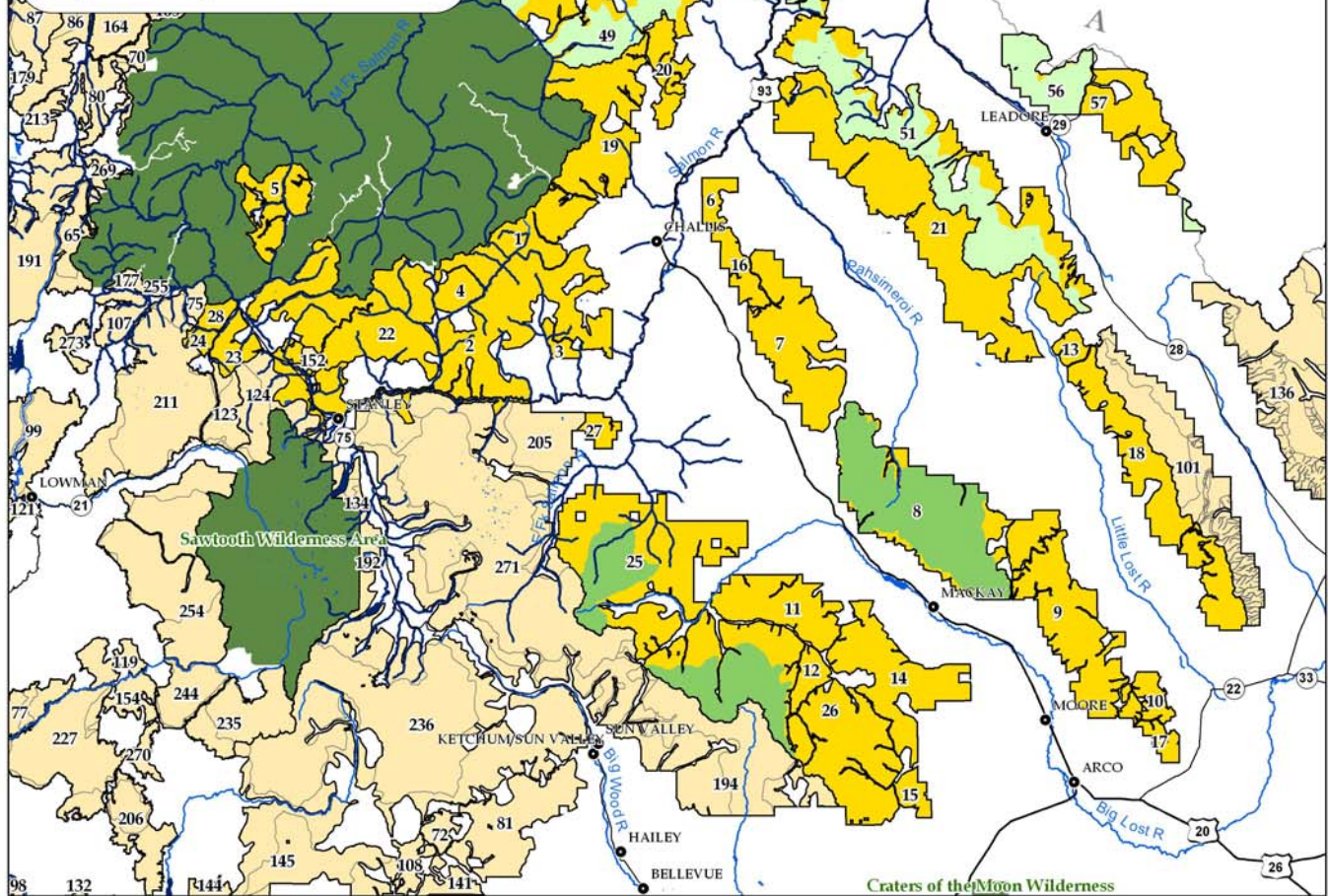
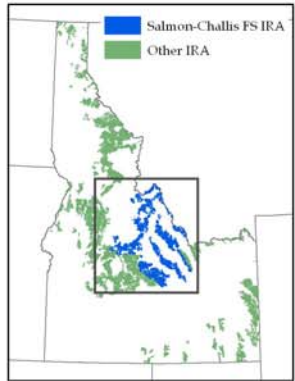


Salmon-Challis National Forest Inventoried Roadless Areas

- Towns
 - Interstate
 - US Highway
 - State Highway
 - Rivers
 - Lakes & Reservoirs
 - Bull Trout and Anadromous Species Waters
 - Wilderness Areas
- IRA Category**
- 1C (road construction allowed)
 - 1B (road construction not allowed)
 - 1B-1 (recommended as Wilderness)
 - IRA outside Salmon-Challis NF
 - IRA Boundary



Label	IRA	Total Acres	Acres (1B)	Acres (1B-1)	Acres (1C)	Label	IRA	Total Acres	Acres (1B)	Acres (1B-1)	Acres (1C)
1	06-004 Challis Creek	44,272	0	0	44,272	30	13504 West Panther Creek	32,480	0	0	32,480
2	06-005 Squaw Creek	136,521	0	0	136,521	31	13504a South Panther	6,331	0	0	6,331
3	06-006 Spring Basin	5,226	0	0	5,226	32	13505 Mceleny	3,536	0	0	3,536
4	06-007 Greylock	11,816	0	0	11,816	33	13506 Jureano	25,324	0	0	25,324
5	06-009 Seafoam Peak	31,046	0	0	31,046	34	13507 Haystack Mountain	12,107	0	0	12,107
6	06-010 Grouse Peak	8,941	0	0	8,941	35	13508 Phelan	13,008	0	0	13,008
7	06-011 Pahsimeroi	73,316	0	0	73,316	36	13509 Deep Creek	7,140	0	0	7,140
8	06-012 Borah Peak	130,225	0	112,621	17,604	37	13509a South Deep Creek	12,632	0	0	12,632
9	06-013 King Mountain	87,053	0	0	87,053	38	13510 Jesse Creek	13,983	9,519	0	4,464
10	06-014 Jumpoff Mountain	14,416	0	0	14,416	39	13511 Perreau Creek	8,157	0	0	8,157
11	06-017 Propiary	46,526	0	0	46,526	40	13512 Agency Creek	6,377	0	0	6,377
12	06-019 Copper Basin	10,927	0	0	10,927	41	13513 Sal Mountain	13,952	0	0	13,952
13	06-024 Warm Creek	6,622	0	0	6,622	42	13514 Little Horse	7,620	0	0	7,620
14	06-025 White Knob	65,588	0	0	65,588	43	13515 Napias	9,280	0	0	9,280
15	06-026 Cold Springs	8,913	0	0	8,913	44	13516 Oreana	7,568	0	0	7,568
16	06-027 Red Hill	14,983	0	0	14,983	45	13517 Musgrove	8,174	0	0	8,174
17	06-028 Wood Canyon	7,736	0	0	7,736	46	13518 Duck Peak	48,571	4,815	0	43,756
18	06-601 Diamond Peak	78,475	0	0	78,475	47	13520 Sheepeater	35,389	0	0	35,389
19	06-901 Camas Creek	68,454	0	0	68,454	48	13521 Long Tom	20,401	13,380	0	7,021
20	06-902 Taylor Mountain	16,780	0	0	16,780	49	13901 Camas Creek	35,401	27,747	0	7,654
21	06-903 Lemhi Range	154,717	0	0	154,717	50	13902 Taylor Mountain	46,583	18,415	0	28,168
22	06-908 Loon Creek	106,325	0	0	106,325	51	13903 Sal Mountain	153,270	101,026	0	52,244
23	06-915 Hanson Lakes	13,533	0	0	13,533	52	13903a Goldbug Ridge	12,732	7,195	0	5,537
24	06-916 Red Mountain	4,903	0	0	4,903	53	13941 Blue Joint Mountain	480	480	0	0
25	06-920 Boulder - White Clouds	139,119	0	35,232	103,887	54	13942 Anderson Mountain	18,479	12,088	0	6,391
26	06-921 Pioneer Mountains	172,192	0	51,048	121,144	55	13943 West Big Hole	84,274	62,028	0	22,246
27	06-922 Railroad Bridge	7,903	0	0	7,903	56	13944 Goat Mountain	35,602	34,585	0	1,017
28	06-923 Blue Bunch Mountain	6,121	0	0	6,121	57	13945 Italian Peak	49,967	2,552	0	47,415
29	13501 Napoleon Ridge	51,362	0	0	51,362	58	13946 Allan Mountain	46,420	35,339	0	11,081